

**Guide**

# **Sage 200 Professional**

**System Requirements and  
Prerequisites for on-premise  
deployment (2024 R2)**

**Sage**

## Copyright statement

© Sage (UK) Limited, 2024. All rights reserved.

If this documentation includes advice or information relating to any matter other than using Sage software, such advice or information is provided for information purposes only. While Sage takes responsible steps to ensure the accuracy and completeness of such information, it can only be general in nature. You should therefore take appropriate steps to ensure it is correct and relevant to your circumstances. You should also consider taking professional advice when appropriate, for example to ensure that the results obtained from using the software comply with statutory requirements.

No part of this documentation may be copied, photocopied, reproduced, translated, microfilmed, or otherwise duplicated on any medium without prior written consent of Sage (UK) Limited or Sage Hibernia Limited, publisher of this work.

Use of the software described in this documentation is subject to Sage (UK) Limited or Sage Hibernia Limited's Licence Agreement enclosed with, or displayed by, that software.

Sage, Sage logos, Sage product and service names mentioned herein are the trademarks of Sage Global Services Limited or its licensors.

Sage UK

C23 - 5 & 6 Cobalt Park Way

Cobalt Park

Newcastle Upon Tyne

NE28 9EJ

Sage Hibernia Ltd trading as Sage Ireland

1 Central Park

Dublin 18

Issue date: 13/11/2024

Pbn No: 4779

# Contents


- 1 | Introduction ..... 4**
- 2 | New for Sage 200 Professional ..... 5**
- 3 | Checking the prerequisites ..... 6**
- 4 | Supported software ..... 10**
- 5 | Security and firewall settings ..... 15**
- 6 | Minimum specifications for client and server machines ..... 21**

# Introduction

This guide is designed to provide Business Partners and customers with the system requirements for Sage 200 Professional in an on-premise deployment.

Sage 200 Professional is made up of various core and optional modules that integrate with the core product. When determining your system requirements, you must make sure that you have considered the requirements for all the parts that you want to use, as some modules have different system requirements.

The application footprint on each of the Sage 200 client machines can be large. Each of the client machines that run Sage 200, as well as the servers, must meet the minimum specification. See [Minimum specifications for client and server machines on page 21](#).

**Note:** We will sometimes update these guides with new information or corrections. The most up-to-date versions of our guides are available from: [Sage 200 Installing and Upgrading](#) .

# New for Sage 200 Professional

## 2024 R2

### Prerequisites

New prerequisites:

- Microsoft .NET Framework version 4.8 (or later) for Sage 200 server and client.
- The **Application Initialization** feature must be enabled for IIS (Web Server (IIS) > Web Server > Application Development > Application Initialization).

Prerequisites removed:

- Windows Identity Foundation (WIF).

### Upgrade notes

- We've made some changes to the Sage bank feeds service. If you're already using bank feeds, you will need to run a brief update the next time you use bank feeds.
- 

## 2024 R1

### Changes to supported software

#### Support removed

- Microsoft SQL Server 2017.

### Prerequisites

- The server computer name can't be longer than 15 characters.

# Checking the prerequisites

Before you install Sage 200, you must make sure the required prerequisites are installed on your system. You must also make sure that your installations of Microsoft SQL Server and Microsoft Internet Information Services (IIS) have the required settings.

## Using the prerequisite tool

We have provided a tool to help you check that the required prerequisites are installed on your server. Use this tool to check the following:

- ☑ The server computer name starts with a letter, end with a letter or digit, and have as interior characters only letters, digits, and hyphens.

For more information about domain name rules, see section 2.3.1 of [RFC - 1035](#).

- ☑ Microsoft .NET Framework version 4.8 (or later) is installed.

**Note:** This may already be included if you have installed a later version of .NET Framework.

- ☑ .NET Framework 4.5 (or later) Features with HTTP Activation.

- ☑ IIS v10 or higher installed, with the following roles and features enabled:

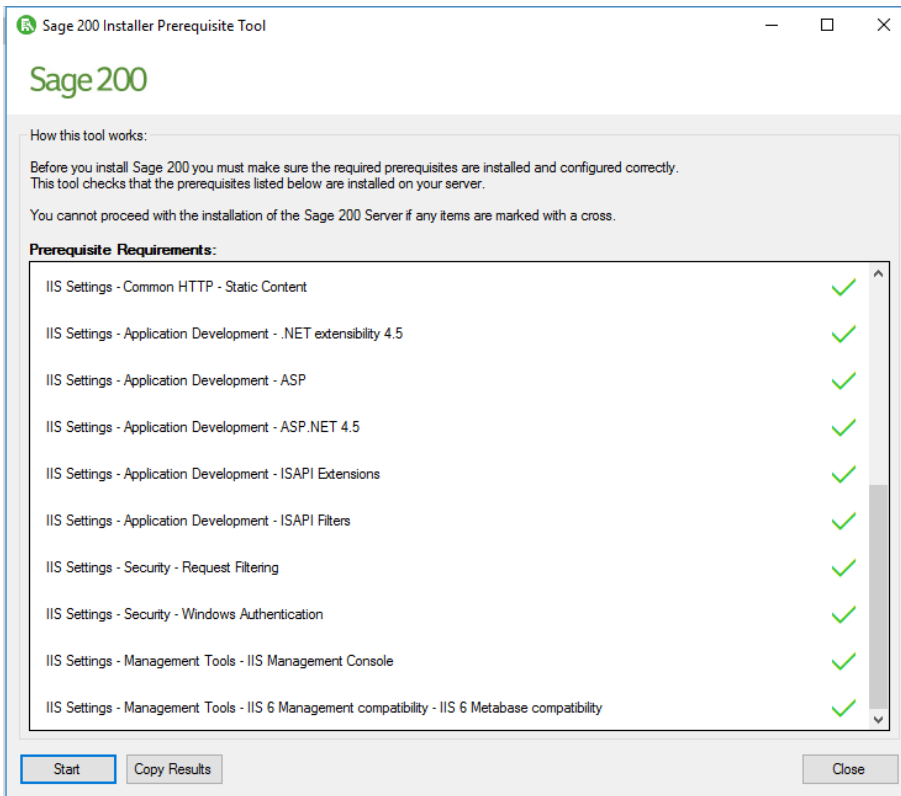
**Note:** These details are for the server role and feature settings in Windows Server, but if you are setting up Windows 10/11 there may be slight differences in the names and locations of the Windows features located in Internet Information Services.

- Web Server (IIS) > Web Server > Common HTTP Features
  - Default Document
  - Directory Browsing
  - HTTP Errors
  - HTTP Redirection
  - Static Content
- Web Server (IIS) > Web Server > Application Development
  - .NET Extensibility 4.5 (or later)
  - Application Initialization
  - ASP
  - ASP .NET 4.5 (or later)
  - ISAPI Extensions
  - ISAPI Filters
- Web Server (IIS) > Web Server > Security
  - Request Filtering
  - Windows Authentication
- Web Server (IIS) > Web Server > Management Tools
  - IIS Management Console
- Web Server (IIS) > Management Tools > IIS 6 Management Compatibility
  - IIS 6 WMI Compatibility
  - IIS 6 Metabase Compatibility

## Run the prerequisite tool

1. Open the **Prerequisite check tool** folder on the ISO.
2. Double - click the **PreRequisiteCheckTool.exe**.
3. Click **Start**.

4. The results will show which prerequisites are installed.



## Additional requirements (not checked by the tool)

- The server computer name can't be longer than 15 characters.
- All machines must have regional and language settings set to either **English (UK)** or **English (Ireland)** only.
- Your domain controller must **not** be set to **Read Only**.
- All machines must have a **c:\** drive although Sage 200 can be installed and run from a drive other than **c:\**.
- Microsoft SQL Server:
  - SQL server must support TLS 1.2.
  - Must be running in Mixed Mode (SQL Server and Windows Authentication mode).
  - The **Server Collation** for SQL server must be set to **Latin1\_General\_CI\_AS**.
  - The **Default Language** for SQL server must be set to **English**. Do not set it to **British English**.
  - If you're using Business Intelligence, SQL Server and Analysis Services must be installed on the same machine with the same instance name.



# Prerequisites for the client

- All machine names must start with a letter, end with a letter or digit, and have as interior characters only letters, digits, and hyphens.
- All machines must have regional and language settings set to either **English (UK)** or **English (Ireland)** only.
- All machines must have a **c:\** drive although Sage 200 can be installed and run from a drive other than **c:\**.
- Microsoft .NET Framework version 4.8 **must** be installed.
- Microsoft .NET Framework version 3.5 is also installed, if you are using Sage 200 BI.
- Microsoft Visual C++ 2015-2019 Redistributable (x86) - 14.24.28127.  
Microsoft Visual C++ 2013 Redistributable (x86) – 12.0.40664.  
Microsoft Visual C++ 2010 x86 Redistributable (for Manufacturing client only).

**Note:** These are included in the Sage 200 installer, but can also be downloaded from Microsoft: [The latest supported Visual C++ downloads](#)

# Supported software

## Operating systems

	Server	Client
Windows 11 (Pro and Enterprise editions)	No <sup>1</sup>	Yes
Windows 10 (32-bit and 64-bit) (Pro and Enterprise editions)	No <sup>1</sup>	Yes
Windows Server 2022 (Standard, Essentials & Datacenter editions)	Yes	Yes
Windows Server 2019 (Standard, Essentials & Datacenter editions)	Yes	Yes

<sup>1</sup> Not supported for production environments but may be used for demonstration and training purposes only.

## Sage 50 Accounts to Sage 200 migration tool

Windows 11 (Pro and Enterprise editions)
Windows 10 (32-bit and 64-bit) (Pro and Enterprise editions)

## Sage connected apps - Power BI, Power Automate

*Sage connected apps* refers to applications that connect to your Microsoft 365 account. This includes Microsoft Power BI, and Microsoft Power Automate.

- The Sage connected apps can only be used with Microsoft 365 Business Standard (formerly Office 365 Business Premium), Enterprise (E1, E3 or E5) or Office 365 Education (A1, A3, A5) subscriptions.
- To use Microsoft Power Automate with our provided flows, we recommend a Power Automate *Per user plan*.

## Wide Area Network (WAN) and Virtual Private Network (VPN) connections

We do **not** support running Sage 200 over a Wide Area Network (WAN) or a Virtual Private Network (VPN). These connection types usually increase latency in communications between the Sage 200 server, the Sage 200 client and the SQL server. High latency between these components can cause unacceptable performance and database timeouts.

# Remote Desktop Services (formerly Terminal Services)

	Server	Client
Windows Server 2022 *	Yes	Yes
Windows Server 2019 *	Yes	Yes

\* The application must be deployed using 'Session based Desktop Deployment' with a published remote desktop. 'Virtual machine based desktop deployment' is not supported.

Requirements for deploying Remote Desktop Services:

- The Remote Desktop Services installation must be deployed using **Session-based desktop deployment**. Deployment using **Virtual-machine based desktop deployment** is **not** recommended.
- Sage 200 is only recommended when publishing the whole desktop environment through Remote Desktop Services.  
Delivering Sage 200 as a **RemoteApp** solution is **not** recommended.

For Remote Desktop Services servers hosting Sage 200 client sessions, we recommend:

- At least 600MB memory per user on the server, for each client session running occasional or one-off tasks, such as an account enquiry or price check.
- At least 1GB memory for each client session processing for any prolonged period of time, for tasks such as checking in stock, or creating purchase orders.
- You should run large batch processes and updates on the local area network, or out of hours.

**Note:** These figures are for the Sage 200 desktop only. If other applications are to be ran at the same time, they will have their own memory requirements.

## SQL server

Microsoft SQL Server 2022 - Standard or Enterprise editions

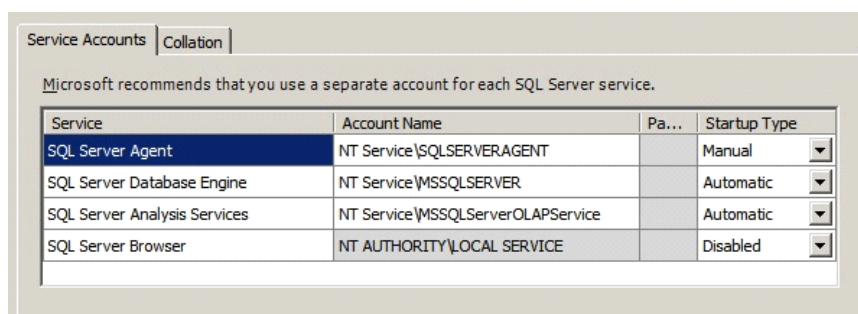
Microsoft SQL Server 2019 - Standard or Enterprise editions

### Prerequisites for SQL server

Sage 200 Professional is **not** supported when SQL server is installed on a Domain controller.

- SQL server must support TLS 1.2.
- In **Server Configuration**, the **Server Collation** for SQL server must be set to **Latin1\_General\_CI\_AS**.
- In **Database Engine Configuration**, the SQL server **Authentication mode** must be set to **Mixed Mode (SQL Server authentication and Windows authentication)**.

- The **Default Language** for SQL server must be set to **English**. Do not set it to **British English**.
- We recommend that you use the default accounts set up by the SQL server installation wizard. (In previous editions of Microsoft SQL Server, we recommended running SQL Server as Local System Accounts.)



### For Sage 200 BI

- Sage 200 BI is not supported on Workgroup editions of SQL server. This is because Business Intelligence requires Analysis Services.
- Microsoft SQL Server and Analysis Services must be installed on the same machine with the same instance name.

## Web browsers and devices

	Desktop app	Web Portal	Self Service web app
Microsoft Edge on Windows desktop PCs and tablets	Yes	Yes	Yes
Apple Safari on tablets (iOS)	Not applicable	Yes	Yes
Google Chrome on Windows desktop PCs and Android tablets	Yes	Yes	Yes

- The Web Portal is designed to be used with desktop monitors and tablets, with the screen in landscape (horizontal) mode.
- Other web browsers and devices may be compatible but have not been tested.

### Automatically log in to the Web Portal or workspaces

You may be asked to log in when using the Web Portal, or workspaces in Self Service web app or the desktop. If you don't want to log in each time, you will need to change your Windows Internet Options to use automatic logon.

We recommend that you set this for your local Intranet zone, however you may choose to set Trusted Sites instead depending on your security policies.

- Local Intranet zone.
  - a. In Windows settings, open **Internet Options**.
  - b. Go to the **Security** tab, then select the **Local intranet** zone and select **Custom Level**.
  - c. Set user **User Authentication > Logon** to **Automatic Logon with current user name and password**.
- Trusted Sites.
  - a. In Windows settings, open **Internet Options**.
  - b. Go to the **Security** tab, then select **Trusted sites**.
  - c. Select **Sites**, then add your server URL e.g. **https://<server\_name>**.
  - d. Select **Custom Level**, then set **User Authentication > Logon** to **Automatic Logon with current user name and password**.

## Microsoft 365 / Microsoft Office

Functions	2021 <sup>1</sup>		2019 <sup>1</sup>		Microsoft 365 <sup>2</sup>		
	32-bit	64-bit	32-bit	64-bit	Desktop 32-bit	Desktop 64-bit	Online App
Excel Reporting	Yes	Yes	Yes	Yes	Yes	Yes	No
Send to Excel (from workspaces and lists)	Yes	Yes	Yes	Yes	Yes	Yes	Yes
Opening Attachments	Yes	Yes	Yes	Yes	Yes	Yes	No
Send Email (not from Report Designer)	Yes	No	Yes	No	Yes	No	No
Report Designer - output to email	Yes	No	Yes	No	Yes	No	No
Power BI, Power Automate <sup>4</sup>	No	No	No	No	Yes <sup>3</sup>	Yes <sup>3</sup>	Yes <sup>3</sup>
Sage 200 BI	Yes	No	Yes	No	Yes	No	No

<sup>1</sup> Microsoft Office 2021, 2019 - Standard, Home and Business, Small Business Premium, Professional Plus, and Enterprise editions.

<sup>2</sup> Microsoft 365 Business Standard (formerly Office 365 Business Premium), Microsoft 365 Apps for Enterprise (formerly Office 365 Professional Plus), and Enterprise editions. Home and Personal editions are **not** supported.

<sup>3</sup> Microsoft 365 Business Standard (formerly Office 365 Business Premium), Enterprise (E1, E3 or E5) or Office 365 Education (A1, A3, A5) subscription is required for connected apps: Microsoft Power BI, and Microsoft Power Automate. Your Microsoft 365 subscription must include Microsoft Entra ID P1 or P2 (formerly Azure Active Directory Premium P1 or P2).

<sup>4</sup> To use Microsoft Power Automate, we recommend a Power Automate Per user plan.

## Compatibility checker

We've produced this article to help you quickly check compatibility for the Sage 200 suite.

- [Sage 200 Professional - Compatibility Checker for Sage 200 Suite](#)

# Security and firewall settings

Sage 200 Professional uses a combination of Windows security and SSL certificates to secure communications between the Sage 200 server and client machines.

## Windows File Permissions

The Sage 200 client can be installed to any location on a client machine. To find the Sage 200 server, the client looks for a file called `\\server name\Sage`.

In the final step of installation process, the permissions of this folder share are changed as follows:

### Domain

When deployed in an Active Directory Domain environment, access to the central Sage file share (e.g. c:\Sage) and associated files and subdirectories is restricted to the Sage 200 user and admin groups.

**Note:** All domain controllers on the same domain as Sage 200 need to be accessible and writeable.

### Workgroup

When deployed in a Windows workgroup environment, the central Sage file share (e.g. c:\Sage) and associated files and subdirectories have their permissions set to **Everyone | FullControl**. We recommend that you set the Share and Security permissions as follows:

- Set the Share permissions to **FullControl/Change/Read** for these users:
  - Sage 200 Administrators group
  - Sage 200 Users group
  - Sage 200 Services user
  - Sage 200 Secured Services user
- Set the Folder Security to **Modify/Read&Execute/ListFolderContents/Read/Write** for these users:
  - Sage 200 Administrators group
  - Sage 200 Users group
  - Sage 200 Secured Services user

**Note:** Once you have installed Sage 200, restart the machine before you access System Administration. This is so the security permissions are set correctly.

## Already have a shared Sage folder on your server?

If you already have a folder share called Sage on your server, then the permissions for this folder will be changed as part of the Sage 200 client installation. You can:

1. Change the name of the share for the existing folder.
2. Install Sage 200 to the existing folder if you're happy with permissions.

## Firewall settings

Sage 200 runs a variety of programs and services that can be affected by security firewall settings.

The following ports are required to use Sage 200:

Server	Port	Details
Database Server (Default SQL Instance)	TCP Port 1433	Default SQL Instance
Database Server (Named SQL instance)	<b>UDP</b> Port 1434	Named SQL Instance
File Server	TCP Port 139	File & Print Sharing
File Server	TCP Port 445	File & Print Sharing
File Server	TCP Port 137	File & Print Sharing
File Server	TCP Port 138	File & Print Sharing
File Server	TCP Port 10443	HTTPS
File Server	TCP Port 443 <sup>1</sup>	HTTPS
Sage 200 Self Service	TCP Port 10444	HTTPS

<sup>1</sup> You will also need to allow access to some URLs. Check the list of URLs in this section.

The following ports are required to use Sage 200 BI:

Server	Port	Details
Database Server (Default SQL Instance)	TCP Port 2383	SQL Analysis Services
Database Server (Named SQL Instance) <sup>2</sup>	TCP Port 2382	SQL Analysis Services
Database Server (Named SQL Instance)	<b>UDP</b> Port 1434	SQL Browser Service

<sup>2</sup> For more information see, [Configure Windows Firewall access for a named instance of Analysis Services \(Microsoft\)](#).

## Access to URLs

You will need to allow access to these URLs, all using HTTPS.



- **licensing.services.sage.com** (server)
- **licensing2.services.sage.com** (server)
- **s200aproductstore.blob.core.windows.net** (server)
- **www.google.com** (server)

Used to check for an internet connection before Sage 200 connects to the licensing server.

- **regulatory-reports.sagecompliance.com** (server and client)

Used for VAT submissions (MTD).

- **www.sagetokenservice.com** (server and client)

Used for Sage bank feeds.

- **eu.sagebankdrive.com** (server and client)

Used for Sage bank feeds.

- **api-money.sage.com** (server and client)

Used for Invoice Payments.

- **sandbox.opayo.eu.elavon.com** (server and client)

Used for Opayo (formerly Sage Pay).

- **live.opayo.eu.elavon.com** (server and client)

Used for Opayo (formerly Sage Pay).

- **www.elavon.co.uk** (server and client)

Used for Opayo (formerly Sage Pay).

- **api.network.sage.com** (server and client)

Used for Sage Network.

- **api.sbc.sage.com** (server and client)

Used for Sage Network.

- **network.sage.com** (server and client)

Used for Sage Network.

## Additional firewall settings if you have a named SQL instance or dynamic ports

Follow the steps below if you have named SQL instance or are using dynamic ports:

1. Find the port number:
  - a. Open **Start > All Programs > Microsoft SQL Server *version* > Configuration Tools > SQL Server Configuration Manager**.
  - b. Select **SQL Server Network Configuration > Protocols for <your instance Name>**.
  - c. Right-click **TCP/IP** and select **Properties**.
  - d. Select the **IP Addresses** tab and scroll down to the **IPAll** group.
  - e. The current port is the **TCP Dynamic Ports** number.
2. Set your Firewall to exclude this port number.

# Application files

If you control and restrict the applications that can be run in your environment, you will need to allow certain application files to run for Sage 200 and its utilities.

## Application files required for Sage 200

### Sage 200 client installer

setup.exe

NDP472-KB4054530-x86-x64-AllOS-ENU.exe

vcredist\_x86.exe

### Sage 200 client

CefSharp.BrowserSubprocess.exe.deploy

RunElevatedInstallOperations.exe.deploy

Sage.MMS.Launcher.Remote.exe.deploy

Sage200Desktop.exe.deploy

Sage200WorkspaceDesigner.exe.deploy

SageReportDesigner.exe.deploy

**Note:** The .deploy files are used for ClickOnce applications.

### Sage 200 Manufacturing client installer

setup.exe

NDP472-KB4054530-x86-x64-AllOS-ENU.exe

vcredist\_x86.exe

### Sage 200 Manufacturing client

CefSharp.BrowserSubprocess.exe.deploy

NominalLinkLauncher.exe.deploy

RunElevatedInstallOperations.exe.deploy

Sage.Manufacturing.AutomatedMrpRun.exe.deploy

Sage.Manufacturing.OperationTimes.exe.deploy


Sage.MMS.Launcher.Remote.exe.deploy

Sage200Desktop.exe.deploy

Sage200Desktop.exe.manifest.deploy

Sage200WorkspaceDesigner.exe.deploy

SageReportDesigner.exe.deploy

 **Note:** The .deploy files are used for ClickOnce applications.

## **Sage 200 System Administration installer**

NDP472-KB4054530-x86-x64-AllOS-ENU.exe

setup.exe

## **Sage 200 System Administration**

SAALauncher.exe.deploy

## **Sage 200 suite installer**

aspnet\_regiis.exe

Sage200API.exe

Sage200EBanking.exe

Sage200SelfService.exe

SSLCertificateUtil.exe

vcredist\_x86.exe

## **Sage 200 CRM standalone**

Sage.TaskLauncher.Listener.exe

TLService.exe

## **Sage 200 BI**

BIEnableDisable.exe

IAEngineMakeRx.exe

RegisterXll.exe

Sage200BIAdminUtility.exe

ScheduledUpdateCubes.exe

## **Tools and SDK**

AddOnViewExtender.exe

DataModelBuilder.exe

ModelExtensionPackager.exe

QueryEditor.exe

ReportReset.exe

Sage200ExceptionViewer.exe

Sage200OnlineMigrationTool.exe

Sage200WorkspaceConverter.exe

SageDataModelGenerator.exe

SageObjectStoreBuilder.exe

SageTransientDataModelGenerator.exe

SDBXPackager.exe

# Minimum specifications for client and server machines

These are the **minimum** specifications for each client and server machine in a Sage 200 Professional deployment. Users with large databases or high numbers of concurrent users will require higher specifications.

Due to the wide variation of companies that use Sage 200, it is not possible to give exact specifications for each system. Factors such as the concurrent number of users, size of the database and estimated growth should all be taken into consideration when sizing a server.

When tasks are processed, CPU and memory resources are used on both the client and the server. Therefore, the specification of both machines will affect the overall performance of the system.

To make sure Sage 200 displays correctly:

- Check that your screen resolution is set to the **recommended** setting for your display.  
To check this, open **Settings > System > Display**, and ensure that the **Display resolution** is set to the **recommended** size.
- Check that your text size is set to **100%**.  
To check this, open **Settings > System > Display**, and ensure that the text size is set to **100%**.

	Processor	Disk	Memory	Network
<b>Sage 200 Server</b> Sage 200 Server with Microsoft SQL Server	Dual-core 2.6GHz or equivalent	7,200 rpm SATA with 4GB disk space after SQL Server is installed.	4GB	Gigabit Ethernet
<b>Sage 200 Client</b> Client	Dual Core 1.6GHz or equivalent	7,200 rpm SATA with 500MB disk space required.	2GB	Gigabit Ethernet

**Sage UK**  
**C23 - 5 & 6 Cobalt Park Way**  
**Cobalt Park**  
**Newcastle Upon Tyne**  
**NE28 9EJ**

**Sage Hibernia Ltd trading as Sage  
Ireland**  
**1 Central Park**  
**Dublin 18**

[www.sage.com](http://www.sage.com)

**Sage**

© 2024 The Sage Group plc or its licensors. Sage, Sage logos, Sage product and service names mentioned herein are the trademarks of Sage Global Services Limited or its licensors. All other trademarks are the property of their respective owners.